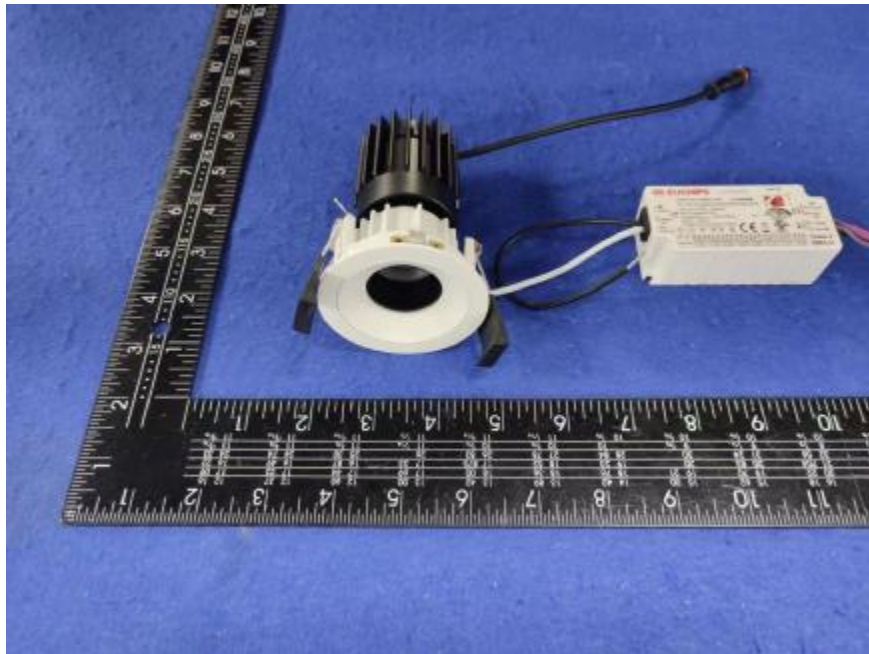


Luminaire Photograph



Light Output Ratio:	62.1%	
Luminaire Power:	12.09 W	
SHR Nominal:	0.50	Calculated using the TM5
SHR Maximum:	0.60	fine grid method.

C Range: 0 - 360DEG
C Interval: 30.0DEG
Test Speed: HIGH
Temperature: 25.3 °C
Operators: zoe
Test Date: 2023-12-7

Range: 0 - 180DEG
Interval: 1.0DEG
Test System: EVERFINE GO-SPEX500_V1 SYSTEM V2.00.461
Humidity: 65.0%
Test Distance: 3.160m [K=1.0000]
Remarks: LAMP: CMA1306-0000-000N0U0A30G Ra:90
LENS: PM-1084B 36R
DRIVER: PUP10A-1WMC-350 260mA
30minutes warm-up

LUMINOUS INTENSITY DISTRIBUTION DIAGRAM

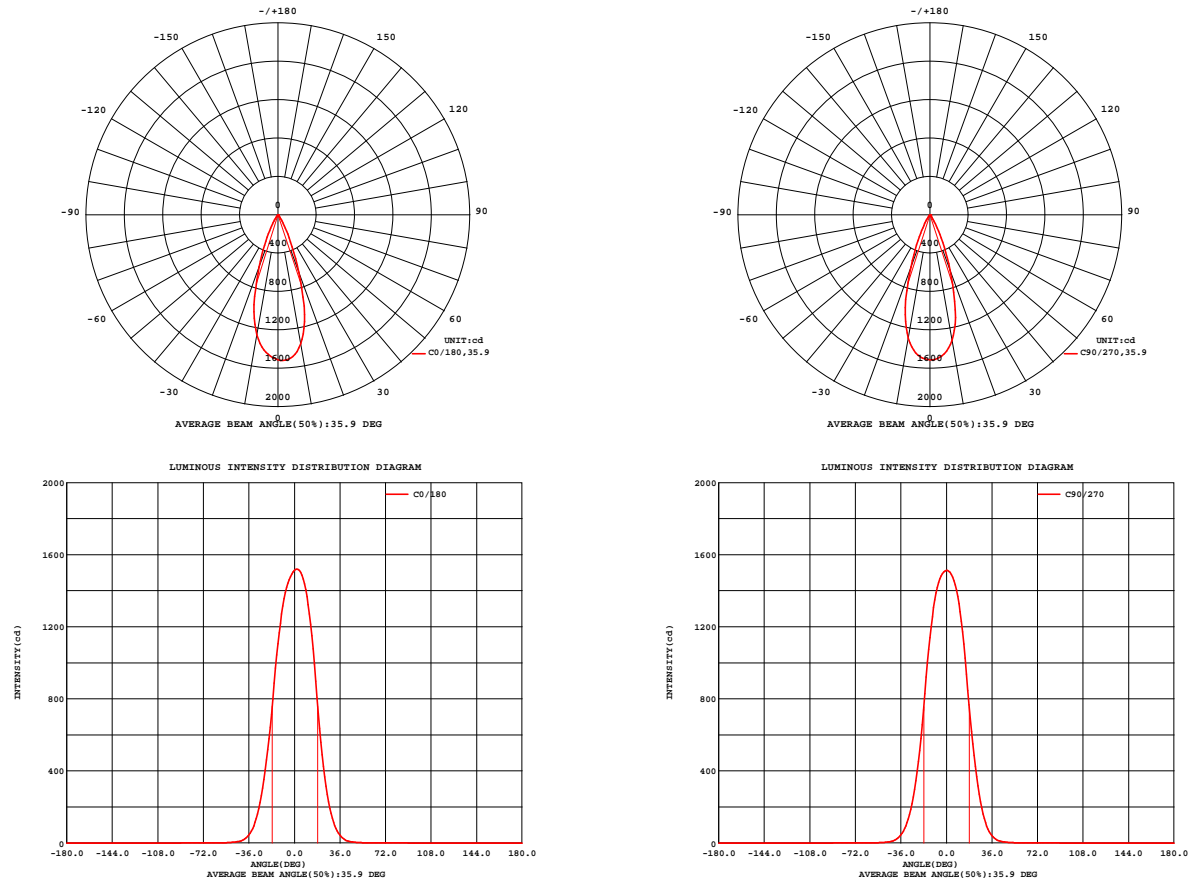


Fig. C0/C180

Fig. C90/C270

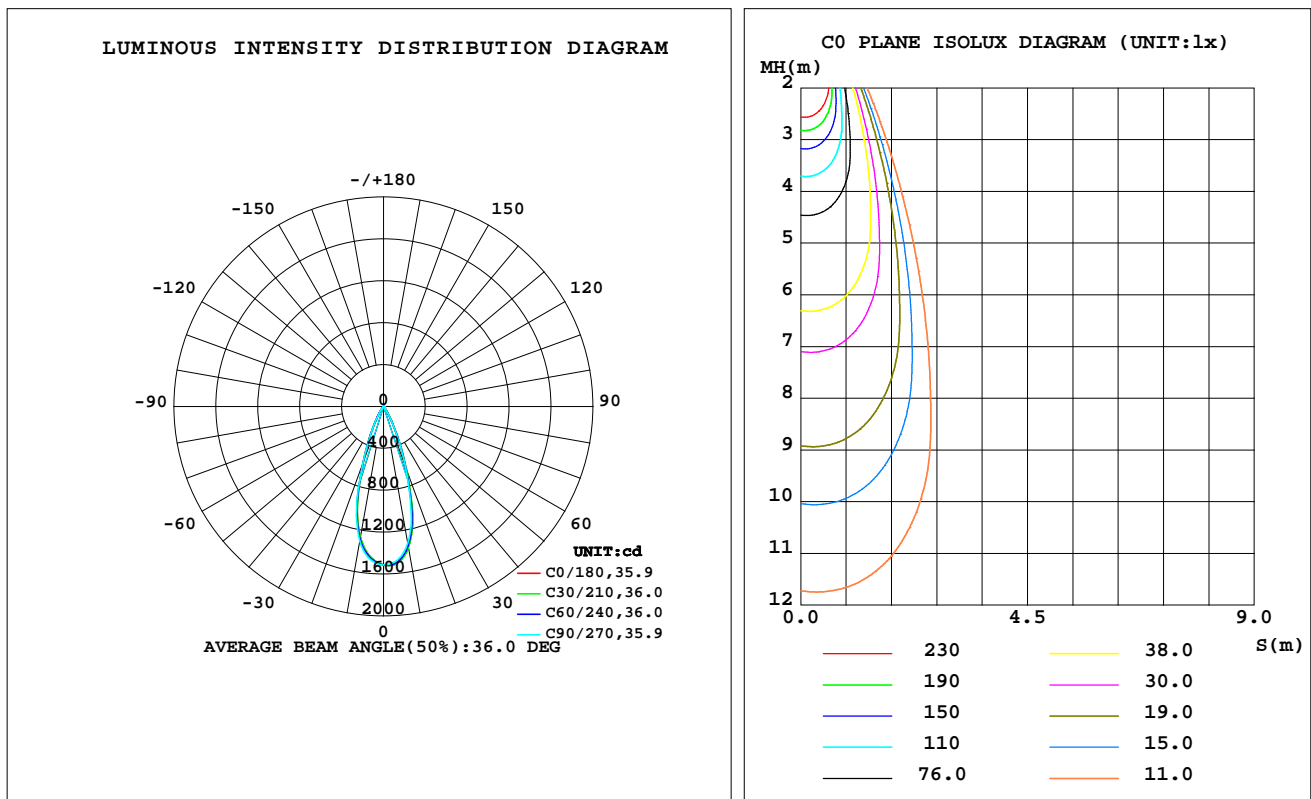
C Range: 0 - 360DEG
C Interval: 30.0DEG
Test Speed: HIGH
Temperature: 25.3 °C
Operators: zoe
Test Date: 2023-12-7

Range: 0 - 180DEG
Interval: 1.0DEG
Test System: EVERFINE GO-SPEX500_V1 SYSTEM V2.00.461
Humidity: 65.0%
Test Distance: 3.160m [K=1.0000]
Remarks: LAMP: CMA1306-0000-000N0U0A30G Ra: 90
LENS: PM-1084B 36R
DRIVER: PUP10A-1WMC-350 260mA
30minutes warm-up

LUMINAIRE PHOTOMETRIC TEST REPORT

Test:U:120.16V I:0.1016A P:12.095W PF:0.9895 Freq:59.98Hz Lamp Flux:959.178x1 lm		
NAME: 2318.116-LEA-13	TYPE:	WEIGHT:
SPEC.: 3000K	DIM.:	SERIAL No.: 2312071429
MFR.: RISE	SUR.: 0.00180864m2	Shielding Angle:

DATA OF LAMP		PHOTOMETRIC DATA Eff: 49.27 lm/W			
MODEL	CREE	I _{max} (cd)	1520	S/MH(C0/180)	0.57
NOMINAL POWER(W)	12	LOR(%)	62.1	S/MH(C90/270)	0.56
RATED VOLTAGE(V)	120	TOTAL FLUX(lm)	595.90	UP,DN(C0-180)	0.0,31.4
NOMINAL FLUX(lm)	959.178	CIE CLASS	DIRECT	UP,DN(C180-360)	0.0,30.7
LAMPS INSIDE	1	up(%)	0.0	CIBSE SHR NOM	0.50
TEST VOLTAGE(V)	120	down(%)	62.1	CIBSE SHR MAX	0.60



C Range: 0 - 360DEG
C Interval: 30.0DEG
Test Speed: HIGH
Temperature:25.3℃
Operators:zoe
Test Date:2023-12-7

Range: 0 - 180DEG
Interval: 1.0DEG
Test System:EVERFINE GO-SPEX500_V1 SYSTEM V2.00.461
Humidity:65.0%
Test Distance:3.160m [K=1.0000]
Remarks: LAMP:CMA1306-0000-000N0U0A30G Ra:90
LENS:PM-1084B 36R
DRIVER:PUP10A-1WMC-350 260mA
30minutes warm-up

ZONAL FLUX DIAGRAM

ZONAL FLUX DIAGRAM:

	C0	C45	C90	C135	C180	C225	C270	C315		zone	total	%lum,lamp
10	1367	1362	1328	1284	1270	1278	1306	1349	0- 10	135.7	135.7	22.8,14.1
20	636.2	644.0	618.3	579.6	578.3	570.0	580.6	617.4	10- 20	269.9	405.6	68.1,42.3
30	137.6	135.4	135.0	135.0	135.7	133.3	133.2	134.8	20- 30	145.8	551.3	92.5,57.5
40	17.89	16.78	16.57	18.07	19.46	18.93	19.03	17.99	30- 40	36.91	588.2	98.7,61.3
50	3.025	2.926	2.766	2.866	3.001	3.029	2.995	2.951	40- 50	5.924	594.2	99.7,61.9
60	0.5815	0.5670	0.5452	0.5598	0.5643	0.5878	0.6124	0.6110	50- 60	1.359	595.5	99.9,62.1
70	0.1322	0.1241	0.1146	0.1184	0.1316	0.1354	0.1406	0.1327	60- 70	0.3080	595.8	100,62.1
80	0.0239	0.0194	0.0233	0.0219	0.0264	0.0208	0.0245	0.0200	70- 80	0.0590	595.9	100,62.1
90	0	0	0	0	0	0	0	0	80- 90	0.0144	595.9	100,62.1
100	0	0	0	0	0	0	0	0	90-100	0	595.9	100,62.1
110	0	0	0	0	0	0	0	0	100-110	0	595.9	100,62.1
120	0	0	0	0	0	0	0	0	110-120	0	595.9	100,62.1
130	0	0	0	0	0	0	0	0	120-130	0	595.9	100,62.1
140	0	0	0	0	0	0	0	0	130-140	0	595.9	100,62.1
150	0	0	0	0	0	0	0	0	140-150	0	595.9	100,62.1
160	0	0	0	0	0	0	0	0	150-160	0	595.9	100,62.1
170	0	0	0	0	0	0	0	0	160-170	0	595.9	100,62.1
180	0	0	0	0	0	0	0	0	170-180	0	595.9	100,62.1
DEG	LUMINOUS INTENSITY:cd									UNIT:lm		

C Range: 0 - 360DEG
 C Interval: 30.0DEG
 Test Speed: HIGH
 Temperature:25.3℃
 Operators:zoe
 Test Date:2023-12-7

Range: 0 - 180DEG
 Interval: 1.0DEG
 Test System:EVERFINE GO-SPEX500_V1 SYSTEM V2.00.461
 Humidity:65.0%
 Test Distance:3.160m [K=1.0000]
 Remarks: LAMP:CMA1306-0000-000N0U0A30G Ra:90
 LENS:PM-1084B 36R
 DRIVER:PUP10A-1WMC-350 260mA
 30minutes warm-up

LUMINANCE LIMITATION CURVES

Test:U:120.16V I:0.1016A P:12.095W PF:0.9895 Freq:59.98Hz
Lamp Flux:959.178x1 lm

NAME: 2318.116-LEA-13

TYPE:

WEIGHT:

SPEC.: 3000K

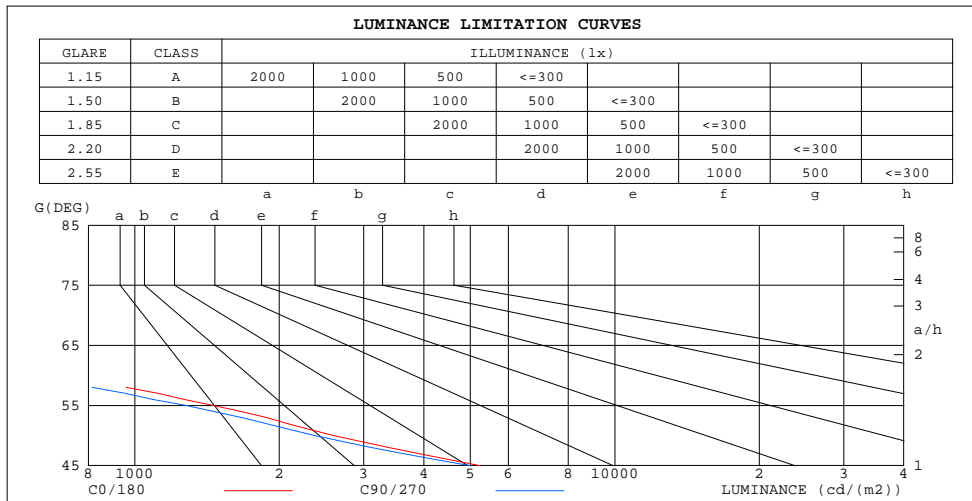
DIM.:

SERIAL No.: 2312071429

MFR.: RISE

SUR.: 0.00180864m2

Shielding Angle:



LUMINANCE cd/(m2)		
G(180)	C0/180	C90/270
85	114	94
80	76	74
75	107	94
70	214	185
65	389	350
60	643	603
55	1463	1283
50	2602	2379
45	5251	5011

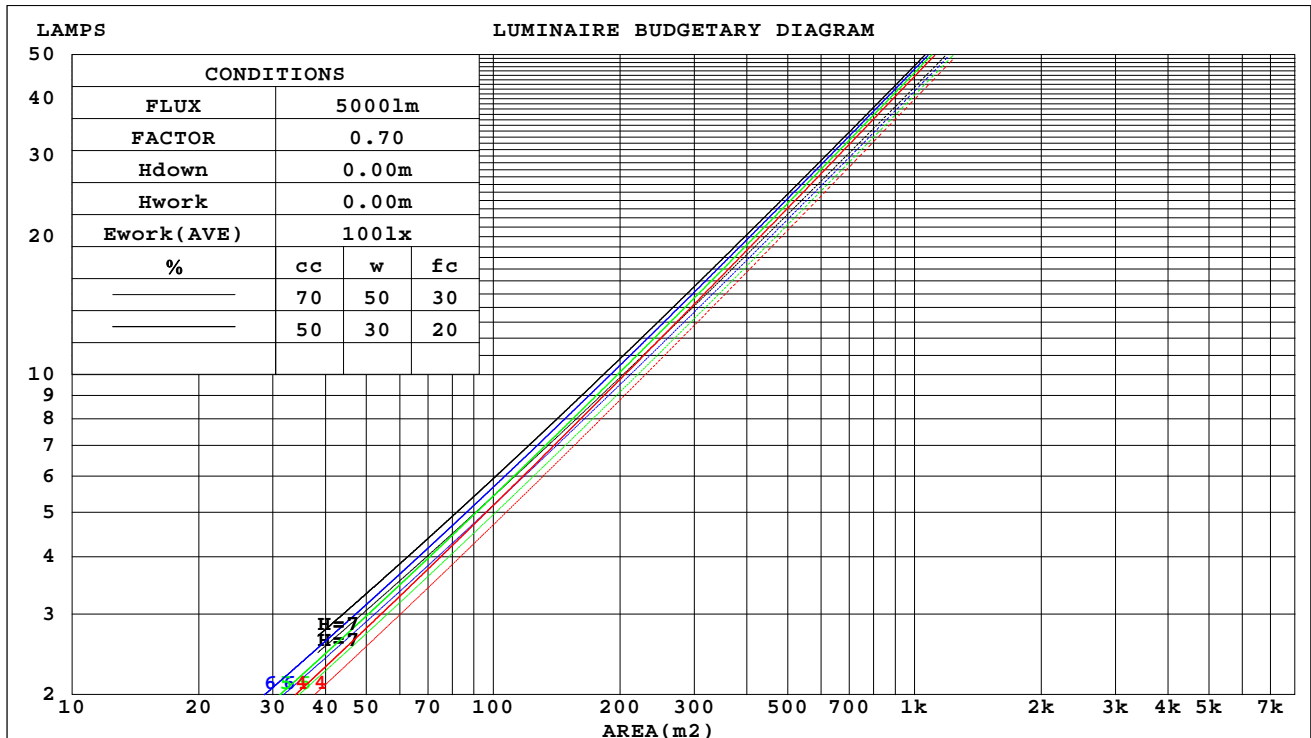
C Range: 0 - 360DEG
C Interval: 30.0DEG
Test Speed: HIGH
Temperature:25.3℃
Operators:zoe
Test Date:2023-12-7

Range: 0 - 180DEG
Interval: 1.0DEG
Test System:EVERFINE GO-SPEX500_V1 SYSTEM V2.00.461
Humidity:65.0%
Test Distance:3.160m [K=1.0000]
Remarks: LAMP:CMA1306-0000-000N0U0A30G Ra:90
LENS:PM-1084B 36R
DRIVER:PUP10A-1WMC-350 260mA
30minutes warm-up

CU AND LUMINAIRE BUDGETARY ESTIMATE DIAGRAM

Test:U:120.16V I:0.1016A P:12.095W PF:0.9895 Freq:59.98Hz Lamp Flux:959.178x1 lm		
NAME: 2318.116-LEA-13	TYPE:	WEIGHT:
SPEC.: 3000K	DIM.:	SERIAL No.: 2312071429
MFR.: RISE	SUR.: 0.00180864m2	Shielding Angle:

cc	80%			70%			50%			30%			10%			0
w	50%	30%	10%	50%	30%	10%	50%	30%	10%	50%	30%	10%	50%	30%	10%	0
fc	20%			20%			20%			20%			20%			0
RCR	RCR:Room Cavity Ratio															
	Coefficients of Utilization(CU)															
0.0	.74	.74	.74	.72	.72	.72	.69	.69	.69	.66	.66	.66	.63	.63	.63	.62
1.0	.70	.68	.67	.68	.67	.66	.66	.65	.64	.64	.63	.62	.62	.61	.61	.59
2.0	.66	.64	.62	.65	.63	.62	.63	.62	.60	.61	.60	.59	.60	.59	.58	.57
3.0	.63	.60	.58	.62	.60	.58	.60	.59	.57	.59	.57	.56	.58	.56	.55	.54
4.0	.60	.57	.55	.59	.57	.55	.58	.56	.54	.57	.55	.54	.56	.54	.53	.52
5.0	.57	.54	.52	.57	.54	.52	.56	.53	.52	.55	.53	.51	.54	.52	.51	.50
6.0	.55	.52	.50	.54	.52	.50	.54	.51	.49	.53	.51	.49	.52	.50	.49	.48
7.0	.53	.50	.48	.52	.49	.48	.52	.49	.47	.51	.49	.47	.50	.48	.47	.46
8.0	.51	.48	.46	.50	.47	.46	.50	.47	.45	.49	.47	.45	.49	.47	.45	.44
9.0	.49	.46	.44	.48	.46	.44	.48	.45	.44	.47	.45	.44	.47	.45	.43	.43
10.0	.47	.44	.42	.47	.44	.42	.46	.44	.42	.46	.44	.42	.45	.43	.42	.41



C Range: 0 - 360DEG
C Interval: 30.0DEG
Test Speed: HIGH
Temperature: 25.3°C
Operators: zoe
Test Date: 2023-12-7

```

Range: 0 - 180DEG
Interval: 1.0DEG
Test System:EVERFINE GO-SPEX500_V1 SYSTEM V2.00.461
Humidity:65.0%
Test Distance:3.160m [K=1.0000]
Remarks: LAMP:CMA1306-0000-000N0U0A30G Ra:90
          LENS:PM-1084B 36R
          DRIVER:PUP10A-1WMC-350 260mA
          30minutes warm-up

```

WEC AND CCEC

Test:U:120.16V I:0.1016A P:12.095W PF:0.9895 Freq:59.98Hz Lamp Flux:959.178x1 lm		
NAME: 2318.116-LEA-13	TYPE:	WEIGHT:
SPEC.: 3000K	DIM.:	SERIAL No.: 2312071429
MFR.: RISE	SUR.: 0.00180864m2	Shielding Angle:

cc	80%			70%			50%			30%			10%			0	
w	50%	30%	10%	50%	30%	10%	50%	30%	10%	50%	30%	10%	50%	30%	10%	0	
fc	20%			20%			20%			20%			20%			0	
RCR	RCR:Room Cavity Ratio						Wall Exitance Coefficients(WEC)										
0.0																	
1.0	.092	.052	.017	.088	.050	.016	.080	.046	.015	.073	.042	.014	.067	.039	.012		
2.0	.086	.047	.015	.083	.046	.014	.076	.043	.013	.071	.040	.012	.065	.037	.012		
3.0	.081	.043	.013	.078	.042	.013	.073	.039	.012	.068	.037	.011	.063	.035	.011		
4.0	.077	.040	.012	.074	.039	.011	.070	.037	.011	.065	.035	.011	.061	.033	.010		
5.0	.073	.037	.011	.071	.036	.011	.067	.035	.010	.063	.033	.010	.060	.032	.010		
6.0	.069	.035	.010	.067	.034	.010	.064	.033	.010	.061	.032	.009	.058	.030	.009		
7.0	.066	.033	.009	.064	.032	.009	.061	.031	.009	.059	.030	.009	.056	.029	.009		
8.0	.063	.031	.009	.062	.030	.009	.059	.030	.008	.057	.029	.008	.054	.028	.008		
9.0	.061	.029	.008	.059	.029	.008	.057	.028	.008	.055	.027	.008	.053	.027	.008		
10.0	.058	.028	.008	.057	.028	.008	.055	.027	.008	.053	.026	.007	.051	.026	.007		

cc	80%			70%			50%			30%			10%			0
w	50%	30%	10%	50%	30%	10%	50%	30%	10%	50%	30%	10%	50%	30%	10%	0
fc	20%			20%			20%			20%			20%			0
RCR	RCR:Room Cavity Ratio			Ceiling Cavity Exitance Coefficients(CCEC)												
0.0	.118	.118	.118	.101	.101	.101	.069	.069	.069	.040	.040	.040	.013	.013	.013	
1.0	.105	.098	.091	.090	.084	.079	.061	.058	.054	.035	.033	.032	.011	.011	.010	
2.0	.094	.082	.072	.081	.071	.063	.055	.049	.044	.032	.029	.026	.010	.009	.008	
3.0	.086	.070	.058	.073	.061	.051	.050	.042	.036	.029	.025	.021	.009	.008	.007	
4.0	.078	.061	.048	.067	.053	.042	.046	.037	.029	.027	.022	.017	.009	.007	.006	
5.0	.072	.053	.040	.062	.046	.035	.043	.032	.024	.025	.019	.014	.008	.006	.005	
6.0	.067	.047	.033	.057	.041	.029	.040	.029	.021	.023	.017	.012	.007	.006	.004	
7.0	.062	.042	.028	.054	.037	.025	.037	.026	.018	.022	.015	.010	.007	.005	.003	
8.0	.059	.038	.024	.050	.033	.021	.035	.023	.015	.020	.014	.009	.007	.005	.003	
9.0	.055	.035	.021	.048	.030	.019	.033	.021	.013	.019	.013	.008	.006	.004	.003	
10.0	.052	.032	.019	.045	.028	.016	.031	.020	.012	.018	.012	.007	.006	.004	.002	

C Range: 0 - 360DEG
C Interval: 30.0DEG
Test Speed: HIGH
Temperature:25.3℃
Operators:zoe
Test Date:2023-12-7

Range: 0 - 180DEG
Interval: 1.0DEG
Test System:EVERFINE GO-SPEX500_V1 SYSTEM V2.00.461
Humidity:65.0%
Test Distance:3.160m [K=1.0000]
Remarks: LAMP:CMA1306-0000-000N0U0A30G Ra:90
LENS:PM-1084B 36R
DRIVER:PUP10A-1WMC-350 260mA
30minutes warm-up

UGR(Unified Glare Rating) Table

Test:U:120.16V I:0.1016A P:12.095W PF:0.9895 Freq:59.98Hz Lamp Flux:959.178x1 lm										
NAME: 2318.116-LEA-13					TYPE:			WEIGHT:		
SPEC.: 3000K					DIM.:			SERIAL No.: 2312071429		
MFR.: RISE					SUR.: 0.00180864m2			Shielding Angle:		
ceiling/cavity	0.7	0.7	0.5	0.5	0.3	0.7	0.7	0.5	0.5	0.3
walls	0.5	0.3	0.5	0.3	0.3	0.5	0.3	0.5	0.3	0.3
working plane	0.2	0.2	0.2	0.2	0.2	0.2	0.2	0.2	0.2	0.2
Room dimensions	Viewed crosswise					Viewed endwise				
x = 2H y = 2H	12.0	12.7	12.2	12.8	13.0	11.7	12.4	11.9	12.6	12.7
3H	11.8	12.5	12.0	12.7	12.9	11.5	12.2	11.8	12.4	12.6
4H	11.7	12.4	12.0	12.6	12.8	11.4	12.1	11.7	12.3	12.5
6H	11.6	12.2	11.9	12.5	12.7	11.3	12.0	11.6	12.2	12.4
8H	11.6	12.2	11.9	12.4	12.7	11.3	11.9	11.6	12.1	12.4
12H	11.5	12.1	11.9	12.4	12.6	11.3	11.8	11.6	12.1	12.4
4H 2H	11.7	12.4	12.0	12.6	12.8	11.4	12.1	11.7	12.3	12.5
3H	11.6	12.1	11.9	12.4	12.6	11.3	11.8	11.6	12.1	12.4
4H	11.5	12.0	11.8	12.3	12.6	11.2	11.7	11.5	12.0	12.3
6H	11.4	11.8	11.7	12.1	12.5	11.1	11.5	11.4	11.9	12.2
8H	11.3	11.7	11.7	12.1	12.4	11.0	11.4	11.4	11.8	12.2
12H	11.3	11.6	11.7	12.0	12.4	11.0	11.4	11.4	11.7	12.1
8H 4H	11.3	11.7	11.7	12.1	12.4	11.0	11.4	11.4	11.8	12.2
6H	11.2	11.5	11.6	11.9	12.3	10.9	11.3	11.3	11.6	12.1
8H	11.1	11.4	11.6	11.9	12.3	10.8	11.2	11.3	11.6	12.0
12H	11.1	11.3	11.5	11.8	12.2	10.8	11.1	11.3	11.5	12.0
12H 4H	11.3	11.6	11.7	12.0	12.4	11.0	11.4	11.4	11.7	12.1
6H	11.1	11.4	11.6	11.9	12.3	10.8	11.2	11.3	11.6	12.0
8H	11.1	11.3	11.5	11.8	12.2	10.8	11.1	11.3	11.5	12.0
Variations with the observer position at spacings(CIE Pub.117):										
S = 1.0H	+ 4.2 / -12.6					+ 4.2 / -13.1				
1.5H	+ 6.6 / - 9.5					+ 6.5 / - 9.7				
2.0H	+ 6.0 / - 8.5					+ 6.1 / - 8.3				

CIE Pub.117, 959.2 lm Total Lamp Luminous Flux Correct (8log(F/F0) = -0.1)
Area: 0.00180864 m2

C Range: 0 - 360DEG
C Interval: 30.0DEG
Test Speed: HIGH
Temperature:25.3℃
Operators:zoe
Test Date:2023-12-7

Range: 0 - 180DEG
Interval: 1.0DEG
Test System:EVERFINE GO-SPEX500_V1 SYSTEM V2.00.461
Humidity:65.0%
Test Distance:3.160m [K=1.0000]
Remarks: LAMP:CMA1306-0000-000N0U0A30G Ra:90
LENS:PM-1084B 36R
DRIVER:PUP10A-1WMC-350 260mA
30minutes warm-up

UTILIZATION FACTORS TABLE

Test:U:120.16V I:0.1016A P:12.095W PF:0.9895 Freq:59.98Hz Lamp Flux:959.178x1 lm		
NAME: 2318.116-LEA-13	TYPE:	WEIGHT:
SPEC.: 3000K	DIM.:	SERIAL No.: 2312071429
MFR.: RISE	SUR.: 0.00180864m2	Shielding Angle:

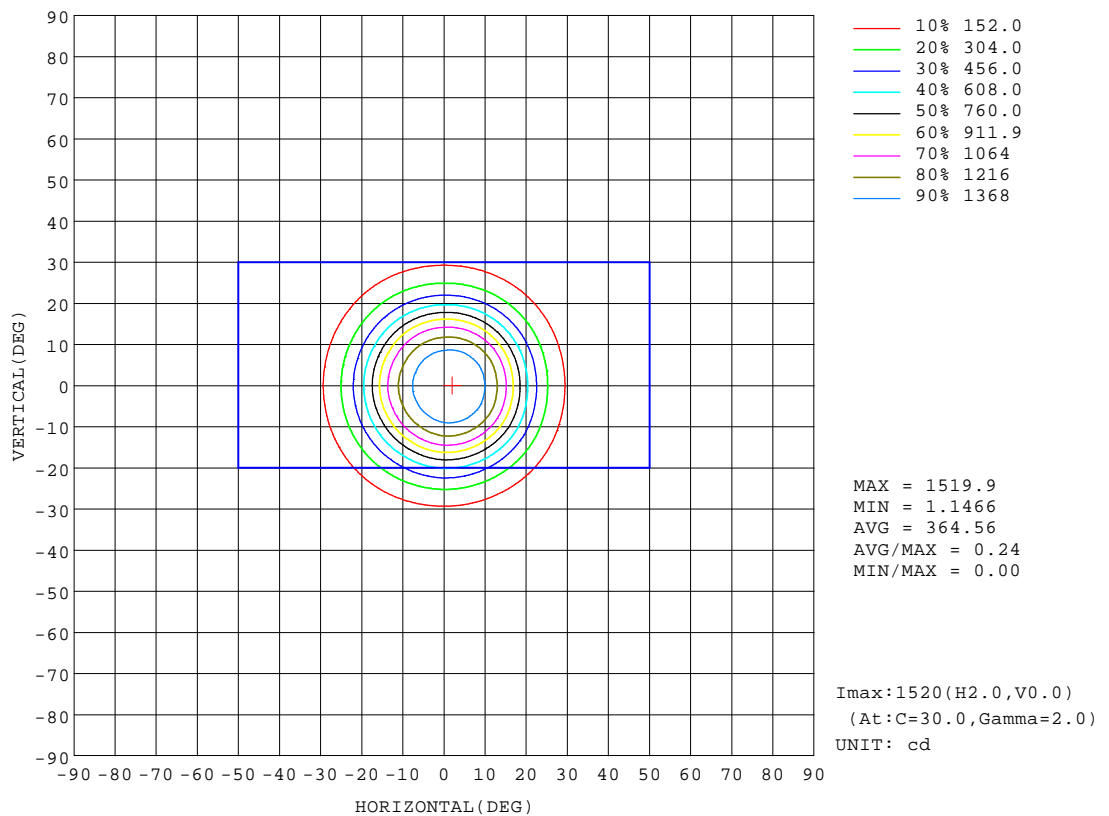
REFLECTANCE										
Ceiling	0.8	0.8	0.8	0.7	0.7	0.7	0.5	0.5	0.5	0
Walls	0.7	0.5	0.3	0.7	0.5	0.3	0.7	0.5	0.3	0
Working plane	0.2	0.2	0.2	0.2	0.2	0.2	0.2	0.2	0.2	0
ROOM INDEX	UTILIZATION FACTORS(PERCENT) $k(RI) \times RCR = 5$									
k = 0.60	56	53	51	56	53	51	56	52	51	49
0.80	61	57	55	60	57	55	60	57	55	53
1.00	63	60	58	63	60	58	62	60	57	55
1.25	65	62	60	65	62	60	64	61	60	57
1.50	67	64	62	66	64	62	65	63	61	59
2.00	68	66	64	67	65	64	66	64	63	60
2.50	69	67	65	68	66	65	66	65	64	60
3.00	70	68	67	69	67	66	67	66	64	61
4.00	71	70	68	70	69	67	68	67	66	62
5.00	72	71	70	71	69	69	68	67	67	62
ROOM INDEX	UF(total)									Direct
According to DIN EN 13032-2 2004			Suspended					SHRNOM = 1.25		

C Range: 0 - 360DEG
C Interval: 30.0DEG
Test Speed: HIGH
Temperature:25.3℃
Operators:zoe
Test Date:2023-12-7

Range: 0 - 180DEG
Interval: 1.0DEG
Test System:EVERFINE GO-SPEX500_V1 SYSTEM V2.00.461
Humidity:65.0%
Test Distance:3.160m [K=1.0000]
Remarks: LAMP:CMA1306-0000-000N0U0A30G Ra:90
LENS:PM-1084B 36R
DRIVER:PUP10A-1WMC-350 260mA
30minutes warm-up

ISOCANDELA DIAGRAM

Test:U:120.16V I:0.1016A P:12.095W PF:0.9895 Freq:59.98Hz Lamp Flux:959.178x1 lm		
NAME: 2318.116-LEA-13	TYPE:	WEIGHT:
SPEC.: 3000K	DIM.:	SERIAL No.: 2312071429
MFR.: RISE	SUR.: 0.00180864m2	Shielding Angle:

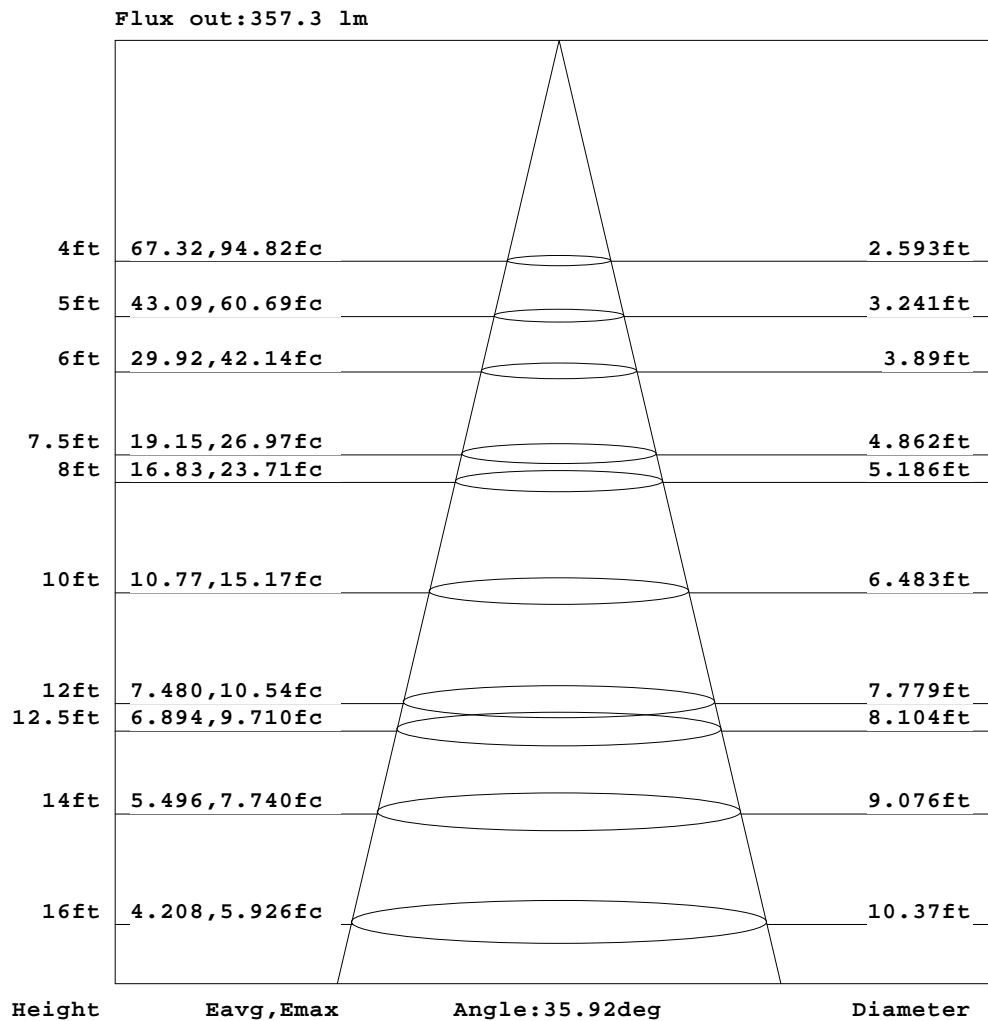


C Range: 0 - 360DEG
C Interval: 30.0DEG
Test Speed: HIGH
Temperature:25.3℃
Operators:zoe
Test Date:2023-12-7

Range: 0 - 180DEG
Interval: 1.0DEG
Test System:EVERFINE GO-SPEX500_V1 SYSTEM V2.00.461
Humidity:65.0%
Test Distance:3.160m [K=1.0000]
Remarks: LAMP:CMA1306-0000-000N0U0A30G Ra:90
LENS:PM-1084B 36R
DRIVER:PUP10A-1WMC-350 260mA
30minutes warm-up

AAI Figure

Test:U:120.16V I:0.1016A P:12.095W PF:0.9895 Freq:59.98Hz Lamp Flux:959.178x1 lm		
NAME: 2318.116-LEA-13	TYPE:	WEIGHT:
SPEC.: 3000K	DIM.:	SERIAL No.: 2312071429
MFR.: RISE	SUR.: 0.00180864m2	Shielding Angle:



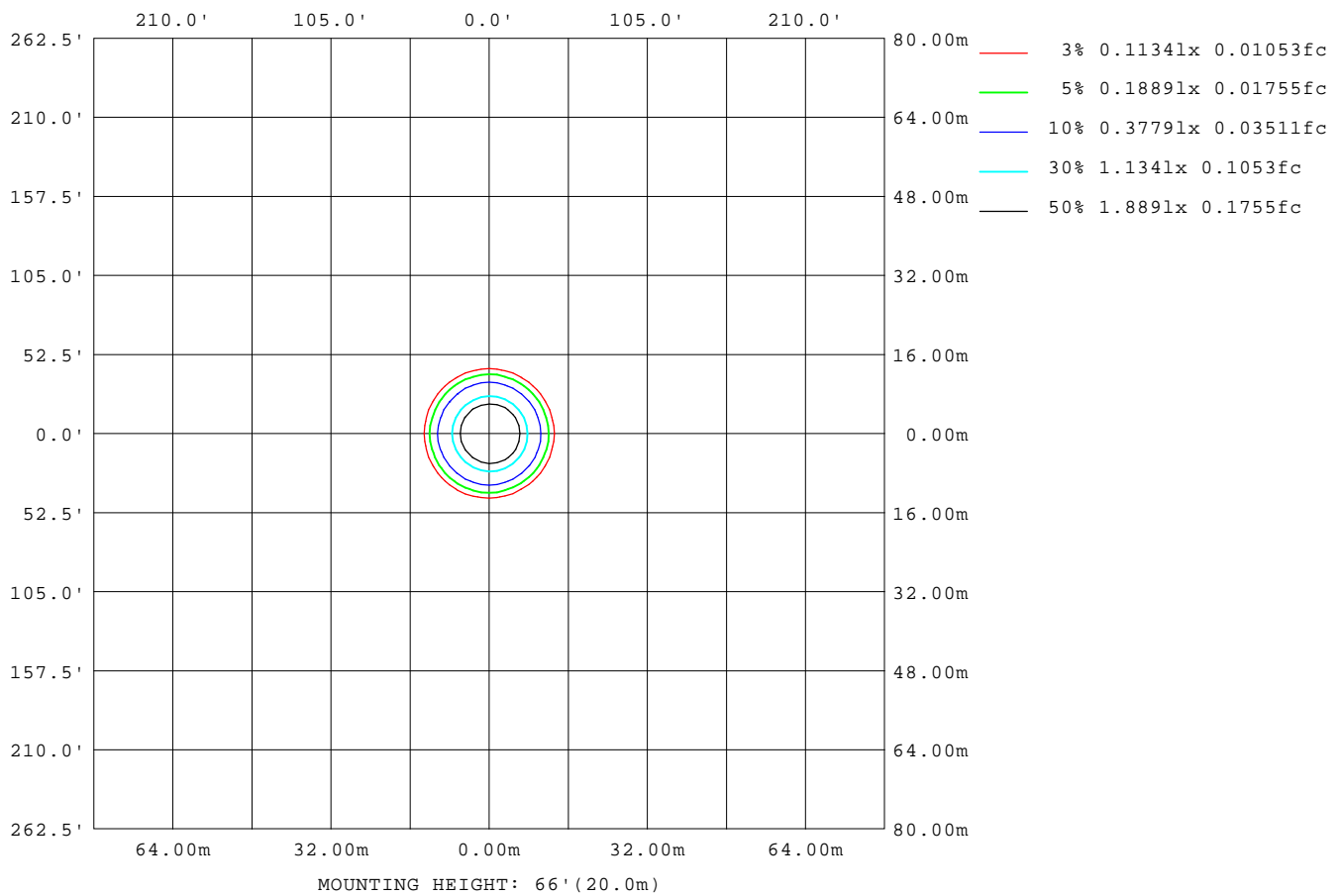
Note: The Curves indicate the illuminated area and the average illumination when the luminaire is at different distance.

C Range: 0 - 360DEG
C Interval: 30.0DEG
Test Speed: HIGH
Temperature: 25.3°C
Operators: zoe
Test Date: 2023-12-7

Range: 0 - 180DEG
Interval: 1.0DEG
Test System: EVERFINE GO-SPEX500_V1 SYSTEM V2.00.461
Humidity: 65.0%
Test Distance: 3.160m [K=1.0000]
Remarks: LAMP: CMA1306-0000-000N0U0A30G Ra:90
LENS: PM-1084B 36R
DRIVER: PUP10A-1WMC-350 260mA
30minutes warm-up

ISOLUX DIAGRAM

Test:U:120.16V I:0.1016A P:12.095W PF:0.9895 Freq:59.98Hz Lamp Flux:959.178x1 lm		
NAME: 2318.116-LEA-13	TYPE:	WEIGHT:
SPEC.: 3000K	DIM.:	SERIAL No.: 2312071429
MFR.: RISE	SUR.: 0.00180864m2	Shielding Angle:



C Range: 0 - 360DEG
C Interval: 30.0DEG
Test Speed: HIGH
Temperature: 25.3°C
Operators: zoe
Test Date: 2023-12-7

Range: 0 - 180DEG
Interval: 1.0DEG
Test System: EVERFINE GO-SPEX500_V1 SYSTEM V2.00.461
Humidity: 65.0%
Test Distance: 3.160m [K=1.0000]
Remarks: LAMP: CMA1306-0000-000N0U0A30G Ra:90
LENS: PM-1084B 36R
DRIVER: PUP10A-1WMC-350 260mA
30minutes warm-up

LED Avg.L Report

Test:U:120.16V I:0.1016A P:12.095W PF:0.9895 Freq:59.98Hz Lamp Flux:959.178x1 lm		
NAME: 2318.116-LEA-13	TYPE:	WEIGHT:
SPEC.: 3000K	DIM.:	SERIAL No.: 2312071429
MFR.: RISE	SUR.: 0.00180864m2	Shielding Angle:

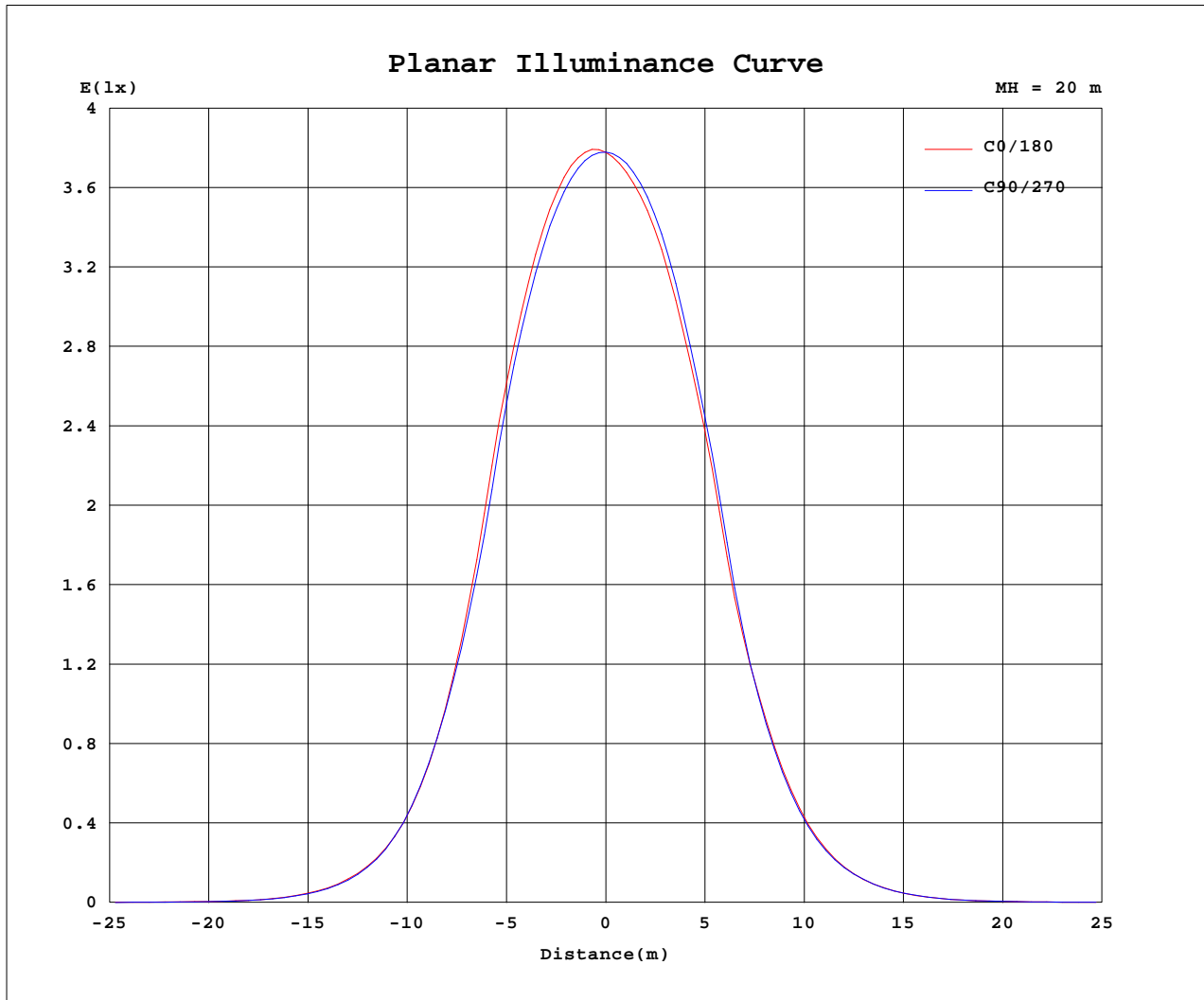
AvgL	cd/m2
L_0~180(65)av	384
L_0~180(75)av	111
L_0~180(85)av	113
L_90~270(65)av	380
L_90~270(75)av	104
L_90~270(85)av	101
L_45(65)av	383
L_45(75)av	96
L_45(85)av	68

Standard: GB/T 29293-2012

C Range: 0 - 360DEG
C Interval: 30.0DEG
Test Speed: HIGH
Temperature:25.3℃
Operators:zoe
Test Date:2023-12-7

Range: 0 - 180DEG
Interval: 1.0DEG
Test System:EVERFINE GO-SPEX500_V1 SYSTEM V2.00.461
Humidity:65.0%
Test Distance:3.160m [K=1.0000]
Remarks: LAMP:CMA1306-0000-000N0U0A30G Ra:90
LENS:PM-1084B 36R
DRIVER:PUP10A-1WMC-350 260mA
30minutes warm-up

Planar Illuminance Curve



C Range: 0 - 360DEG
 C Interval: 30.0DEG
 Test Speed: HIGH
 Temperature: 25.3 °C
 Operators: zoe
 Test Date: 2023-12-7

Range: 0 - 180DEG
 Interval: 1.0DEG
 Test System: EVERFINE GO-SPEX500_V1 SYSTEM V2.00.461
 Humidity: 65.0%
 Test Distance: 3.160m [K=1.0000]
 Remarks: LAMP: CMA1306-0000-000N0U0A30G Ra:90
 LENS: PM-1084B 36R
 DRIVER: PUP10A-1WMC-350 260mA
 30minutes warm-up

LUMINOUS DISTRIBUTION INTENSITY DATA

Test:U:120.16V I:0.1016A P:12.095W PF:0.9895 Freq:59.98Hz Lamp Flux:959.178x1 lm		
NAME: 2318.116-LEA-13	TYPE:	WEIGHT:
SPEC.: 3000K	DIM.:	SERIAL No.: 2312071429
MFR.: RISE	SUR.: 0.00180864m2	Shielding Angle:

Table--1

UNIT: cd

C(DEC) (DEC)	0	30	60	90	120	150	180	210	240	270	300	330						
0	1512	1512	1512	1512	1512	1512	1512	1512	1512	1512	1512	1512						
5	1502	1502	1491	1475	1455	1443	1441	1441	1452	1466	1484	1497						
10	1367	1371	1353	1328	1295	1274	1270	1268	1287	1306	1337	1361						
15	1077	1084	1055	1026	983	963	970	967	987	1002	1037	1067						
20	636	654	634	618	585	575	578	568	572	581	607	628						
25	314	324	318	317	307	304	305	297	298	297	307	315						
30	138	138	133	135	136	135	136	133	134	133	134	135						
35	54.3	52.7	50.3	51.9	53.4	53.4	54.5	53.1	53.7	54.3	52.9	52.9						
40	17.9	17.6	16.0	16.6	17.5	18.7	19.5	18.6	19.2	19.0	18.4	17.6						
45	6.72	6.48	6.27	6.41	6.83	7.12	7.25	7.18	7.12	7.08	6.59	6.57						
50	3.02	2.99	2.86	2.77	2.83	2.90	3.00	3.03	3.03	2.99	2.94	2.96						
55	1.52	1.51	1.41	1.33	1.33	1.35	1.37	1.40	1.45	1.45	1.52	1.53						
60	0.58	0.57	0.56	0.55	0.56	0.56	0.56	0.58	0.60	0.61	0.62	0.60						
65	0.30	0.29	0.28	0.27	0.27	0.28	0.29	0.30	0.31	0.31	0.31	0.31						
70	0.13	0.13	0.12	0.11	0.12	0.12	0.13	0.13	0.14	0.14	0.13	0.13						
75	0.05	0.04	0.04	0.04	0.04	0.04	0.05	0.05	0.05	0.05	0.05	0.04						
80	0.02	0.02	0.02	0.02	0.02	0.02	0.03	0.02	0.02	0.02	0.02	0.02						
85	0.02	0.01	0.01	0.01	0.01	0.01	0.02	0.01	0.01	0.02	0.01	0.01						
90	0.00	0.00	0.00	0.00	0.00	0.00	0.00	0.00	0.00	0.00	0.00	0.00						
95	0.00	0.00	0.00	0.00	0.00	0.00	0.00	0.00	0.00	0.00	0.00	0.00						
100	0.00	0.00	0.00	0.00	0.00	0.00	0.00	0.00	0.00	0.00	0.00	0.00						
105	0.00	0.00	0.00	0.00	0.00	0.00	0.00	0.00	0.00	0.00	0.00	0.00						
110	0.00	0.00	0.00	0.00	0.00	0.00	0.00	0.00	0.00	0.00	0.00	0.00						
115	0.00	0.00	0.00	0.00	0.00	0.00	0.00	0.00	0.00	0.00	0.00	0.00						
120	0.00	0.00	0.00	0.00	0.00	0.00	0.00	0.00	0.00	0.00	0.00	0.00						
125	0.00	0.00	0.00	0.00	0.00	0.00	0.00	0.00	0.00	0.00	0.00	0.00						
130	0.00	0.00	0.00	0.00	0.00	0.00	0.00	0.00	0.00	0.00	0.00	0.00						
135	0.00	0.00	0.00	0.00	0.00	0.00	0.00	0.00	0.00	0.00	0.00	0.00						
140	0.00	0.00	0.00	0.00	0.00	0.00	0.00	0.00	0.00	0.00	0.00	0.00						
145	0.00	0.00	0.00	0.00	0.00	0.00	0.00	0.00	0.00	0.00	0.00	0.00						
150	0.00	0.00	0.00	0.00	0.00	0.00	0.00	0.00	0.00	0.00	0.00	0.00						
155	0.00	0.00	0.00	0.00	0.00	0.00	0.00	0.00	0.00	0.00	0.00	0.00						
160	0.00	0.00	0.00	0.00	0.00	0.00	0.00	0.00	0.00	0.00	0.00	0.00						
165	0.00	0.00	0.00	0.00	0.00	0.00	0.00	0.00	0.00	0.00	0.00	0.00						
170	0.00	0.00	0.00	0.00	0.00	0.00	0.00	0.00	0.00	0.00	0.00	0.00						
175	0.00	0.00	0.00	0.00	0.00	0.00	0.00	0.00	0.00	0.00	0.00	0.00						
180	0.00	0.00	0.00	0.00	0.00	0.00	0.00	0.00	0.00	0.00	0.00	0.00						

C Range: 0 - 360DEG
C Interval: 30.0DEG
Test Speed: HIGH
Temperature:25.3℃
Operators:zoe
Test Date:2023-12-7

Range: 0 - 180DEG
Interval: 1.0DEG
Test System:EVERFINE GO-SPEX500_V1 SYSTEM V2.00.461
Humidity:65.0%
Test Distance:3.160m [K=1.0000]
Remarks: LAMP:CMA1306-0000-000N0U0A30G Ra:90
LENS:PM-1084B 36R
DRIVER:PUP10A-1WMC-350 260mA
30minutes warm-up